



One-Skein Shawl (Sideways Right Angle) by Dorothy Petri (Crochet)

Materials:

1 x 100g (400m) sock yarn
4mm crochet hook

Tension:

Unblocked – 24sts and 12 rows to 10cm/4"
using 4mm hook

Blocked – 20sts and 10 rows to 10cm/4"

Finished size (after blocking):

43" x 20" (approx.)



Abbreviations:

ch – chain

ch-sp – chain space

st(s) – stitch(es)

t-ch – turning chain (does not count as a stitch)

dc – double crochet

tr – treble

ss – slip stitch

half-shell – 3tr into same st

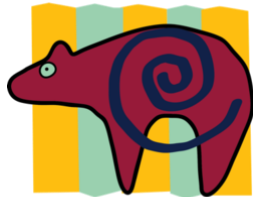
The-Stitchin'-Den-suggests-using-Road-Trip-Sock-Yarn-↵
by-Herd-of-Cats-and-Ali-Pate-out-of-Denver,-Colorado¶

La-Jolla-yarn-by-Baah-Yarns-out-of-Las-Vegas,-NV-is-a-great-↵
Choice-too¶

↵

Permission-given-to-use-this-pattern¶





1st row: 4ch, 2 tr into 4th ch from hook. Turn.

2nd row: 3ch (t-ch), 1 half-shell in tr at the bottom of the t-ch. 2ch, 1tr in next st. 1 tr in top of t-ch. Turn.

3rd row: 3ch (t-ch), 1tr in st at the bottom of the t-ch. 1tr in next st. 2tr in ch-sp. 2ch, 1 half-shell in last tr of half-shell on previous row. Turn.

4th row: 3ch (t-ch), 1 half-shell in st at the bottom of the t-ch. 2ch, 2tr in ch-sp. 1tr in each tr to end. (NB – do not tr in top of t-ch of previous row.) Turn.

5th row: 3ch (t-ch), 1tr in st at the bottom of t-ch. 1tr in each tr. 2tr in ch-sp. 2ch, 1 half-shell in last tr of half-shell on previous row. Turn.

Repeat **4th** and **5th rows** until desired width/length is reached finishing at half-shell edge. If you wish to add an edging, do not fasten off! Remember to leave a length of yarn for the edging.

Edging

1ch, 1dc into st at the bottom of t-ch, 2ch, 1dc into ch-sp, 1dc into each of next 2tr, (2ch, miss 1tr, 1dc into each of next 3tr) to end. Ss into final t-ch and finish off. Weave in ends and wet block your shawl as follows.

Blocking

Soak the shawl for around 20 minutes in a solution of tepid water and hand washing liquid – I find a no-rinse type like Eucalan produces a soft finish. Remove from the water and squeeze gently. Use a large towel to remove excess water. Your shawl should be damp but not dripping. Pin out your shawl and leave to dry completely.

