



The Loopy Ewe
4856 Innovation Dr
Ste A
Fort Collins, CO 80525
970.568.5290

Astral Shawl Designed by Debbie O'Neill Exclusively for The Loopy Ewe

Sizes: Approximately 54" wide by 26" deep. The exact size will depend on blocking.

<input type="checkbox"/>	Knit on RS, purl on WS.
<input type="checkbox"/>	Yarn over.
<input type="checkbox"/>	Slip 1 st knitwise, knit two together, pass the slipped stitch over.
<input type="checkbox"/>	Knit two together (k2tog).
<input type="checkbox"/>	Slip 2 stitches as if to knit one stitch at a time and knit together through the back loops (ssk).
<input type="checkbox"/>	Slip 2 stitches as if to k2tog, k1, pass the 2 slipped stitches over
NOTE: The boxes of the chart enclosed by the thick red lines correspond to the Star Field pattern and Shooting Star pattern respectively, and are repeated as needed.	



Materials:

- 1 skein Malabrigo Sock (100% Superwash Merino Wool; 440yds, 3.5oz), shown in Shery 883.
- 1 40" size US3 (3.25mm) circular knitting needle(or size required for gauge)
- Stitch markers
- Tapestry needle

Gauge: 24 sts and 28 rows = 4" in stockinette stitch; 20 sts and 26 rows = 4" in Star Field pattern.

Glossary

Star Field Chart

This chart represents one panel of the shawl. It will be worked twice on each row as described in the written instructions. To use this chart, work rows 3-20 as shown the first time through, then repeat rows 13-20 9 times and repeat rows 13-16 once. When repeating the rows, work the stitches as shown to the red box, repeat the stitches in the red box as needed, then work the stitches as shown to the next marker.

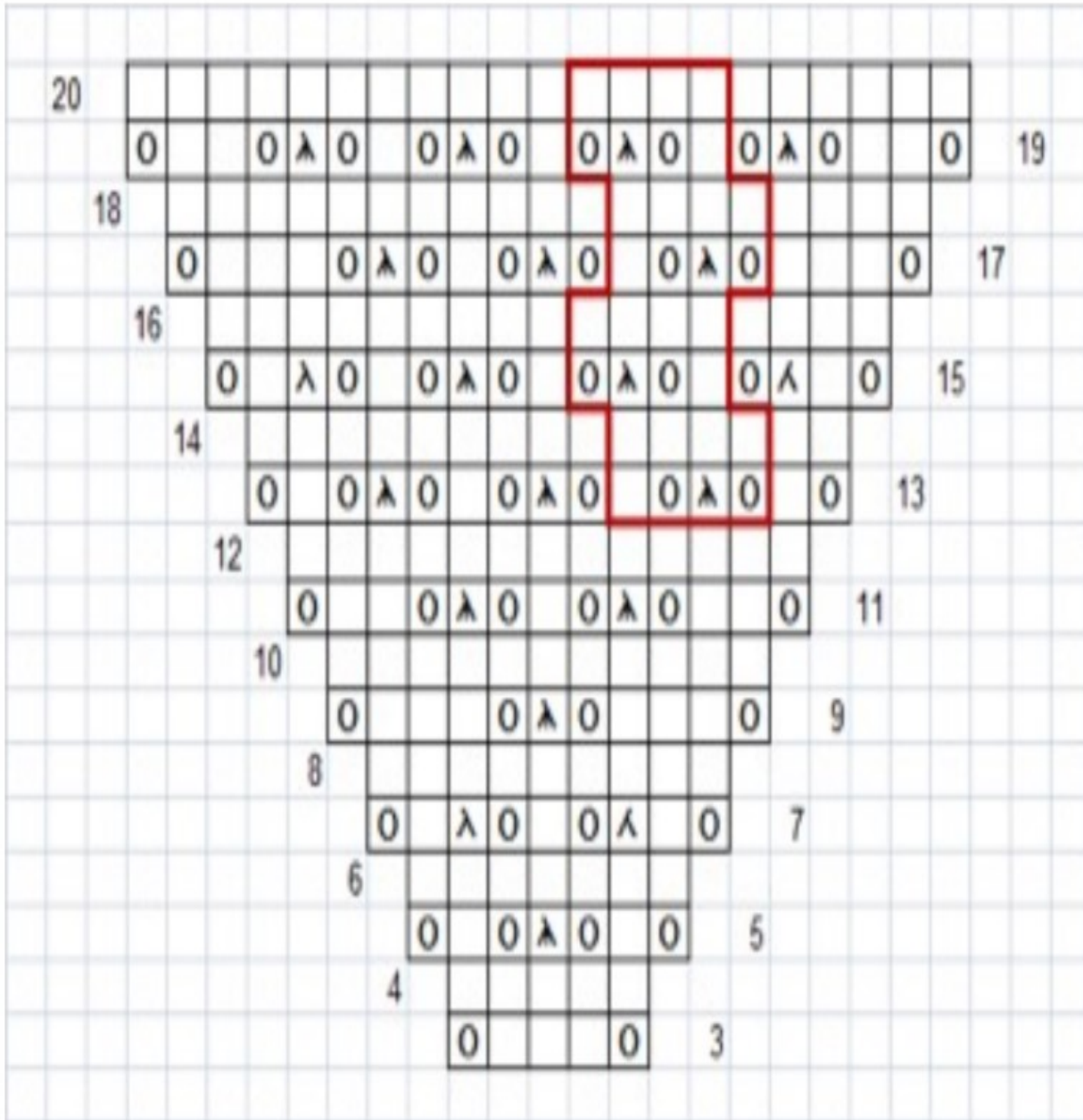


The Loopy Ewe
www.theloopyewe.com



The Loopy Ewe
4856 Innovation Dr
Ste A
Fort Collins, CO 80525
970.568.5290

Astral Shawl



Note: The stitches enclosed by the thick red lines correspond to the Star Field pattern as written below.



Ewe Count
www.ewecount.com

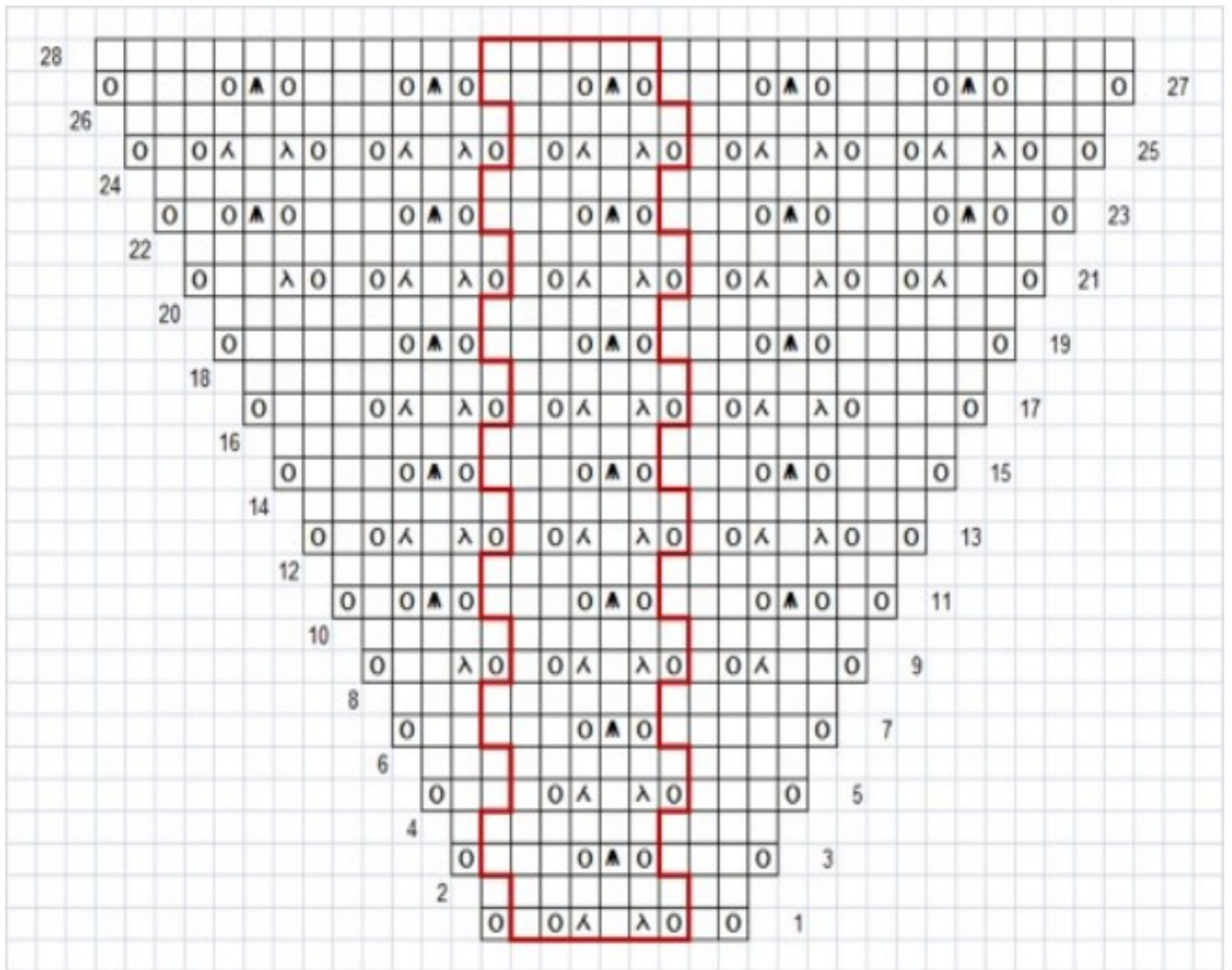


The Loopy Ewe
 4856 Innovation Dr
 Ste A
 Fort Collins, CO 80525
 970.568.5290

Astral Shawl

Shooting Star Chart

This chart represents one panel of the shawl. It will be worked twice on each row as described in the written instructions. To use this chart, work the stitches as shown to the red box, repeat the stitches in the red box as needed, then work the stitches as shown to the next marker.



Note: The stitches enclosed by the thick red lines correspond to the Shooting Star pattern as written below.



The Loopy Ewe
www.theloopyewe.com



The Loopy Ewe
4856 Innovation Dr
Ste A
Fort Collins, CO 80525
970.568.5290

Astral Shawl

Star Field Pattern

Multiple of 4 + 1

These written instructions correspond to the boxes of the chart enclosed by thick red lines and are provided simply for additional reference if needed.

Row 1 (RS): * Yo, sl 1, k2tog, pssso, yo, k1. Repeat from *.

Rows 2 and 4 (WS): Purl.

Row 3: * K1, yo, sl 1, k2tog, pssso, yo, k1. Repeat from *.

Repeat rows 1-4.

Shooting Star Pattern

Multiple of 6

These written instructions correspond to the boxes of the chart enclosed by thick red lines and are provided simply for additional reference if needed.

Row 1 (RS): * Yo, ssk, k1, k2tog, yo, k1. Repeat from *.

Rows 2 and 4 (WS): Purl.

Row 3: * Yo, sl 2 as if to k2tog, k1, p2sso, yo, k3. Repeat from *.

Repeat rows 1-4.

K: Knit.

K2tog: Knit two stitches together.

P: Purl.

Pm: Place marker.

Pssso: Pass slipped stitch over.

P2sso: Pass the 2 slipped stitches over.

RS: Right side of work.

Sl: Slip as if to knit.

Slm: Slip marker.

Ssk: Slip two stitches, one at a time, as if to knit. Knit the 2 stitches together through the back loops.

Tbl: Through the back of loop.

WS: Wrong side of work.

Yo: Yarn over.



The Loopy Ewe
www.theloopyewe.com



The Loopy Ewe
4856 Innovation Dr
Ste A
Fort Collins, CO 80525
970.568.5290

Astral Shawl

Instructions

This shawl is worked as two halves separated by 2 knit stitches and bordered with garter stitch, as described below. Markers are placed to designate the borders and central stitches. The charts are written to represent half of the shawl (without the borders and central stitches). To use the charts, work the stitches as written to the red box, repeat the stitches in the red box as needed, then work the stitches as written to the next marker.

CO 8 sts.

Row 1 (RS): K2, * pm, yo, k1, yo, pm, k2; repeat from * once.

Row 2: Purl, slipping markers as you go.

For all remaining rows, the format is:

RS rows: K2, * slm, work chart as indicated, slm, k2; repeat from * to end of row.

WS rows: K2, slm, purl to last marker, k2.

On the next RS row, begin working the Star Field chart as described above. Work rows 3-20 once, then repeat rows 13-20 of the chart 9 more times, then rows 13-16 once – 200 sts total. Note that the bold red box indicates the stitches that are repeated as the triangles grow. In other words, you will have one additional repeat of these stitches each time you repeat rows 13-20.

On the next RS row, work the first garter stitch band as follows:

Row 1 (RS): K2, * slm, yo, knit to next marker, yo, slm, k2; repeat from * to end of row.

Row 2 (WS): Knit.

Repeat rows 1 and 2 twice more – 212 sts total.



The Loopy Ewe
www.theloopyewe.com



The Loopy Ewe
4856 Innovation Dr
Ste A
Fort Collins, CO 80525
970.568.5290

Astral Shawl

On the next RS row, begin working the Shooting Star chart as described above. You will work rows 1-28 of the Shooting Star chart once – 268 sts total.

On the next RS row, work the second garter stitch band as follows:

Row 1 (RS): K2, * slm, yo, knit to next marker, yo, slm, k2; repeat from * to end of row.

Row 2 (WS): Knit.

Repeat rows 1 and 2 twice more – 280 sts total.

Edging:

On the next RS row, CO 6 sts at the beginning of the needle. (A cable or knitted on cast on works best.)

The edging will be worked over these 6 sts, joining the last stitch of every RS row with the next stitch of the shawl body. Note that the edging increases to 7 sts on row 2 and returns to 6 sts on row 3.

Row 1 (RS): Yo, k2tog, k3, k2tog tbl.

Row 2 (WS): Sl 1, k3, yo twice, k2tog. (7 sts)

Row 3: Yo, k2tog, p1, k1, k2tog, k2tog tbl.

Row 4: Sl 1, k5.

Repeat rows 1-4 until all shawl body stitches have been worked (140 repeats).

BO remaining sts loosely.

Weave in all ends. Wash and block to desired size.



The Loopy Ewe
www.theloopyewe.com